



**Any Business can Provide Wireless Internet Access for Guests and Visitors Quickly and Economically with the GIS-K1**

## GIS-K1:

Wireless Hotspot Gateway for Businesses with up to 25 Concurrent Users

- ❑ Low cost HSPA gateway
- ❑ Plug and play: easy to use wizard speeds installation
- ❑ Custom login page with client branding; choose from 10 backdrops or create your own design
- ❑ Free access with disclaimer; the legal disclaimer can be edited
- ❑ Controlled access uses codes that are generated and managed on the unit; charge for Internet service or give it free
- ❑ Access code usage reporting to track Internet utilization
- ❑ A firewall protects the business network for PCI DSS compliance
- ❑ Remote configuration
- ❑ QoS overall bandwidth control, with bandwidth settings for each code
- ❑ Content filter blocks access to non-approved websites
- ❑ Timer calendar blocks use when the business is closed
- ❑ Access code API for PoS applications
- ❑ Hotspot user isolation
- ❑ Configuration backup and restore
- ❑ URL and MAC filter
- ❑ Access point failure monitoring
- ❑ Port forwarding for remote access to wireless, CCTV

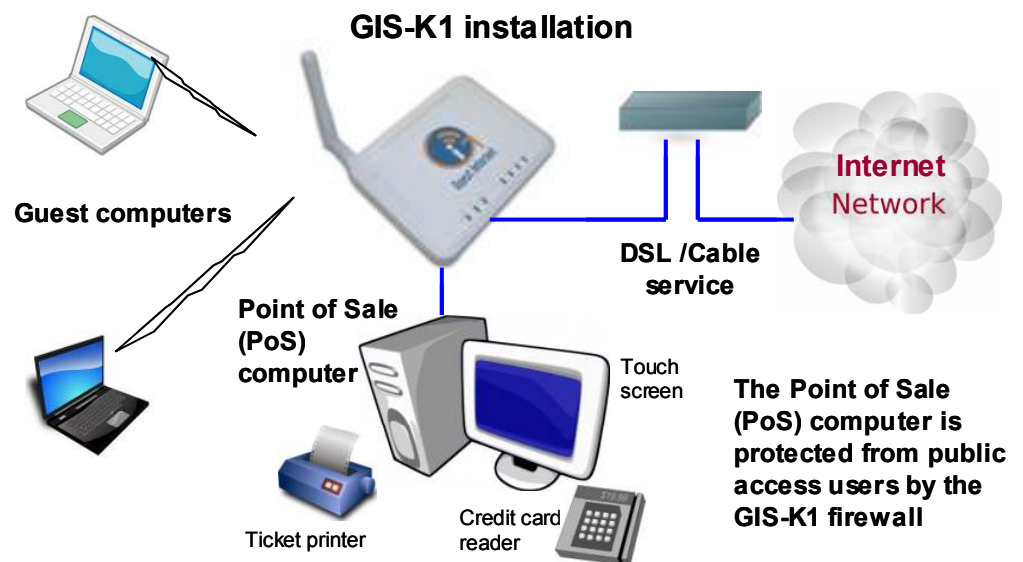
The GIS-K1 offers the lowest-cost approach to providing managed Internet access for restaurants, coffee bars and motel/hotel lobbies. The GIS-K1 can be installed in any other small business that has to provide wireless Internet access for the public.

The GIS-K1 wireless unit is suitable for small installations such as bars and restaurants, and provides a good area of wireless coverage. Installing the GIS-K1 product is simple: connect the unit to the Internet and power it up. A computer wireless connection is made to 'Hot Spot' and then a browser is opened. The browser screen shows the setup wizard.

The GIS-K1 can provide free Internet access with a disclaimer. The disclaimer text was prepared according to US Federal law, however it can be edited to include local laws and restrictions.

The GIS-K1 can also control Internet access: users type an access code into the login page to connect to the Internet. The GIS-K1 includes access code generation and management that is used by the business owner to generate and delete codes. Access codes can be downloaded and printed onto business stationary. Authorized customers are given access codes to use the Internet. Businesses can charge customers for Internet use by selling codes.

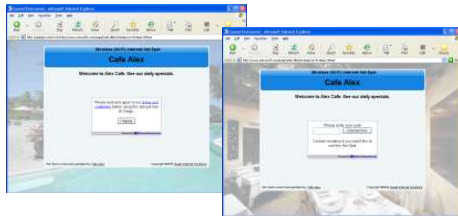
The GIS-K1 LAN ports also provide a firewall for Point of sale terminals and other business computers. The firewall prevents a hacker getting access to the PoS using the public WiFi Hotspot. The firewall also blocks access to the PoS from the Internet. The GIS-K1 firewall feature is compliant with the requirements of the PCI DSS recommendations.





## Users View

### Login page options



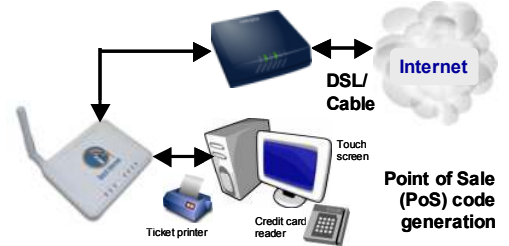
Select from menu or customize

## Custom Login Pages



Create a walled garden

## PoS Integration



Generate access codes via your PoS

## Configuration

### Setup wizard



The setup wizard is a six-step process completed after installation

### Access code generation



Access codes are generated and managed using a simple display

### Advanced Features



Exclusive features that make GIS gateways very powerful tools

## GIS-K1 Technical specifications:

### GATEWAY FEATURES

- Plug and play with the setup wizard
- Firewall blocks access from LAN to WAN
- Local and remote configuration
- Content filter using OpenDNS
- Download/upload speed control
- Allowed IP and MAC addresses
- Free and controlled Internet access
- Timer/calendar to set availability
- Equipment failure monitoring
- Port forwarding for remote access

### AUTHENTICATION

- Concurrent clients: 25
- Access code database: 1000

### LOGIN PAGE

- Branding via the login page generator
- Ten login pages are preinstalled
- Upload your own background graphic
- Create a custom HTML login page design
- Add custom login page banner advertising
- Disclaimer agreement with built in editor
- Link to business web site home page
- Login page access code generator
- Login code usage reporting
- Create a 'walled garden' using URL bypass
- Library of login page designs available
- Login page simulator on our website
- Optional billing page for CC processing
- Customer data collection application
- Login page backup/restore
- Usage reporting

### API FOR PoS INTERFACE

- PoS integration to sell access codes
- Code fetch/ manage via HTTP

### ETHERNET

- WAN (Internet) RJ-45 10/100
- LAN1-LAN4 (network) RJ-45 10/100
- LAN firewall PCI-DSS compliant

### WIRELESS

- Wireless port: 802.11/b/g
- RF Power output: +23dBm (250mW)

### DIMENSIONS AND POWER

- Enclosure: W 4.9" x D 3.9" x H 1"
- 12volt 110v/220v supply, 25W

### WARRANTY: 3 years

### Applications where the GIS-K1 has been deployed

- Restaurant
- Coffee bar
- Public library
- Truck stop
- Sports club
- Gymnasium
- Visitor center
- Dentist reception
- Bookstore
- Internet kiosk
- University
- Motel
- Church
- Contractors office
- Municipal office
- Event reception

Call 1-800-213-0106 for further information, or see our web site: [www.guest-internet.com](http://www.guest-internet.com)  
 Guest Internet Solutions, Unit C-12, 6073 NW 167 St., Miami, FL 33015, USA. Part of the Fire4 Systems Group

The maximum number of concurrent users for the GIS-K1 is specified with a backhaul circuit of 10Mb/sec and with users sending/receiving emails and viewing web sites. The maximum number of concurrent users will be reduced when the Internet backhaul is slower than the recommended speed, and when the user traffic includes download/upload of large files.